



Luck of the Irish

Quilt is 74" x 94"

THE COLORS OF *moda*

Supplies

Blocks:

Bella Solid™ Bundle –9900AB-123

or Fat Quarters* of

9900-74

9900-75

9900-76

9900-101

9900-134

9900-163

9900-173

9900-189

9900-192

9900-228

9900-265

9900-267

Center Chain: 1¾ yards

9900-234

Background: 3¾ yards

9900-98

Binding: ⅔ yard

9900-234

Backing: 5⅞ yards

*Fat Quarter=18" x 22"

Want another color?

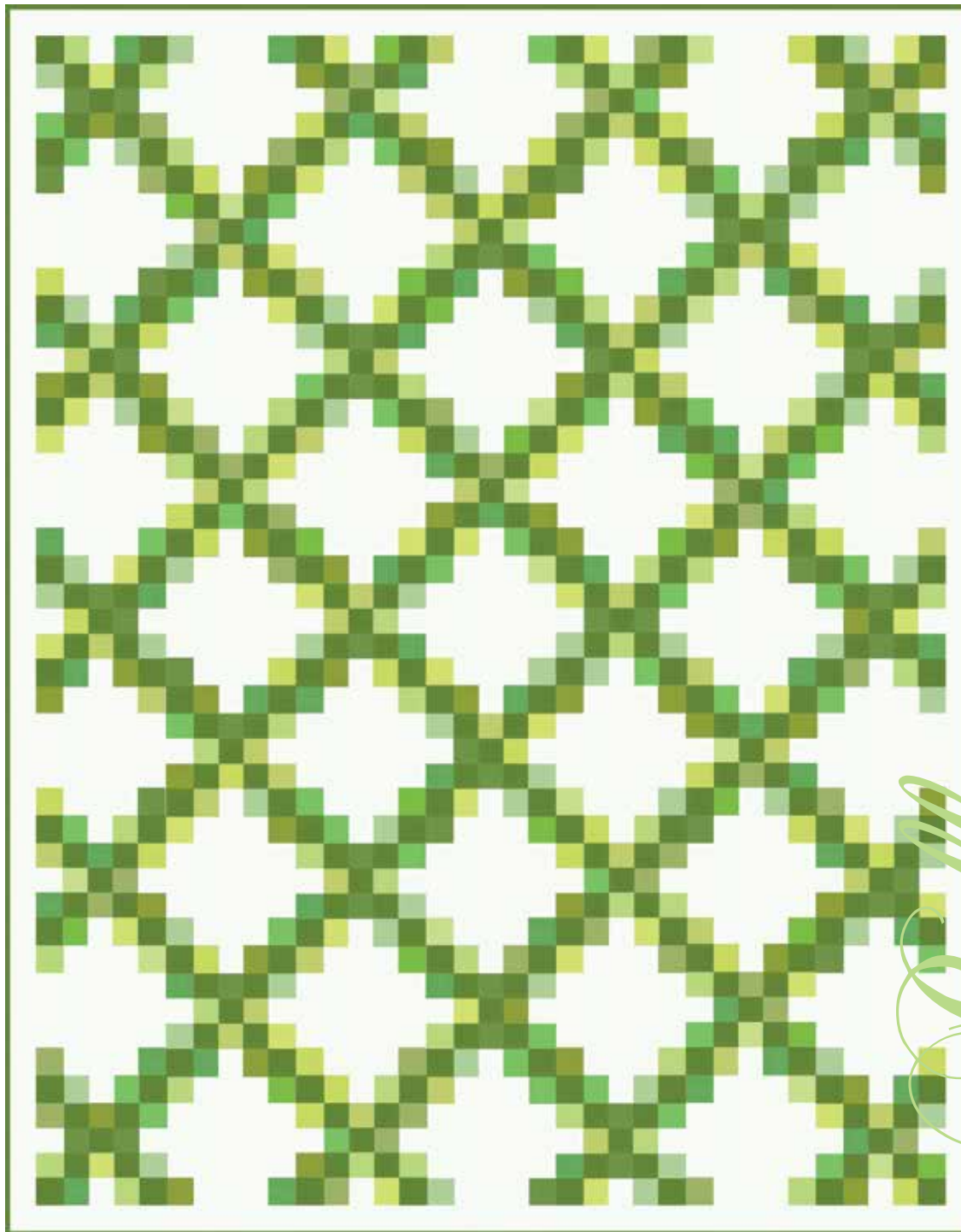
Bella Solid™ 12 Pack Bundles are available in a variety of colors. Ask at your favorite quilt shop.



moda

MODAFABRICS.COM

BSPK1310— SUGGESTED RETAIL \$6.00



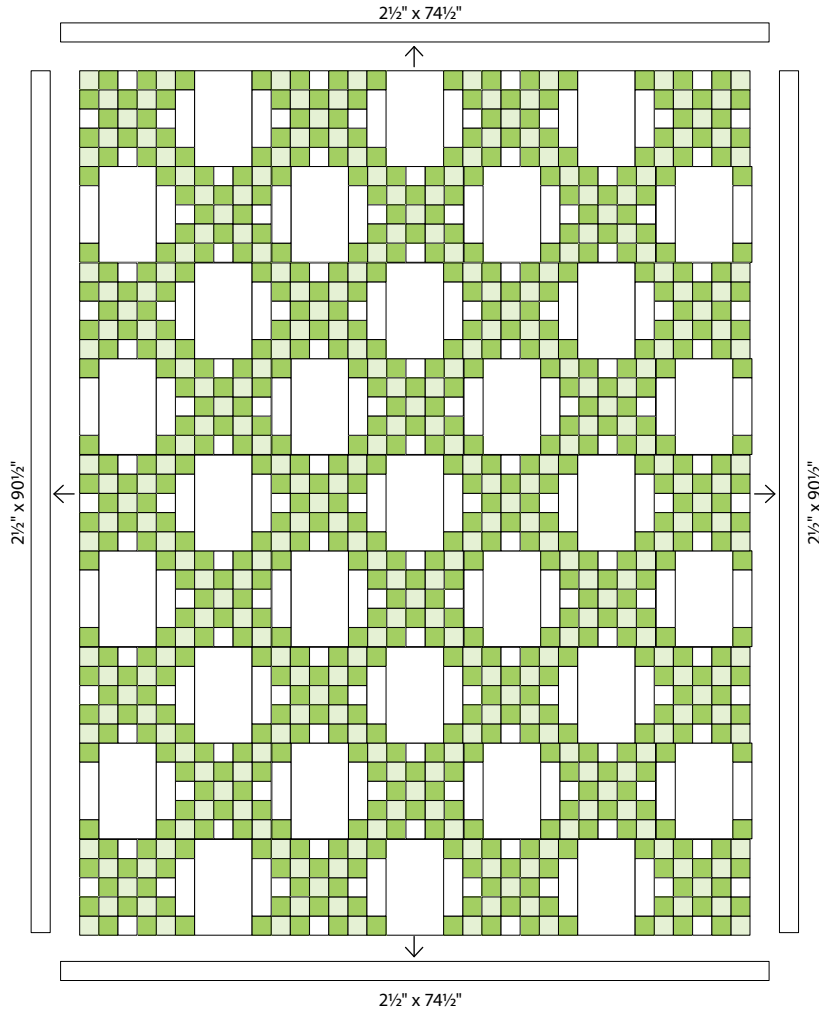
moda
Bella
Solids™

12 pack Luck of the Irish

THE COLORS OF *moda*

Quilt is 74" x 94"

- 3 Add the 2-2½" x 90½" background strips to the quilt sides.
Add the 2-2½" x 74½" background strips to the top and bottom.



moda

- 4 Layer, quilt and bind.

Luck of the Irish

Quilt is 74" x 94".

Cutting

Center Chain:

18-2½" x width of fabric strips
From the strips, cut 36-2½" x 22" strips

Chains:

From EACH of the 12 Fat Quarters cut:
6-2½" x 22" strips
You need 64 strips; 8 will be extra.

Background:

6-10½" x width of fabric strips
From the strips, cut 31-10½" x 6½" rectangles
4-6½" x width of fabric strips
From the strips, cut 8-6½" x 22" strips
17-2½" x width of fabric strips
From 8 strips, cut 16-2½" x 22" strips
Sew 9 strips end to end. From this long strip cut
2-2½" x 90½" and 2-2½" x 74½" strips.

Binding:

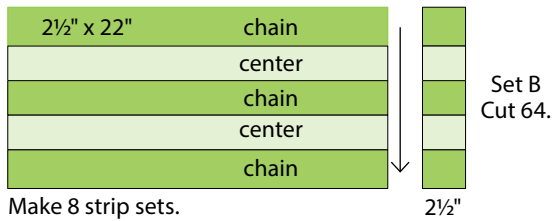
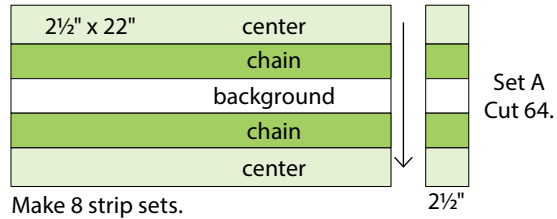
9-2½" x width of fabric strips.
Sew the strips end to end to make the binding.

moda

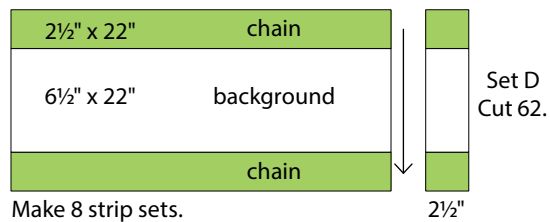
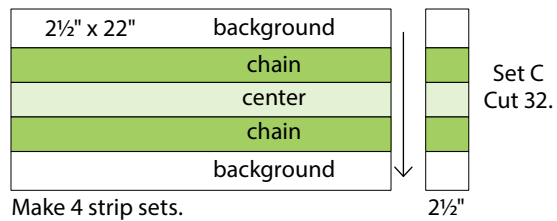
Construction

Use $\frac{1}{4}$ " seams. Press in the direction of the arrows in the diagrams.

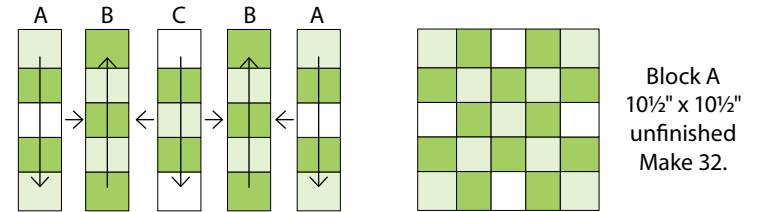
- 1 (A) Make strip sets A, B, C, and D as shown using the $2\frac{1}{2}$ " x 22" strips. Press the seams in one direction. Make 8 each of strip sets A, B, and D; make 4 of strip set C. Cut the number of $2\frac{1}{2}$ " segments as indicated.



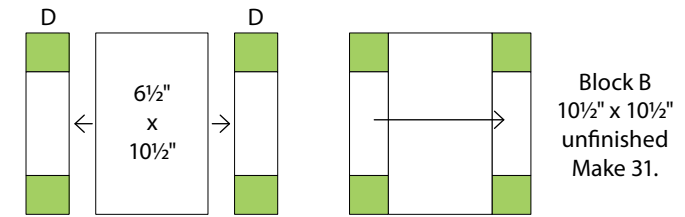
moda



- (B) Join 2 segments from A, 2 from B, and 1 from C to make block A. Make 32.



- (C) Join 2 segments from D and 1-6 $\frac{1}{2}$ " x 10 $\frac{1}{2}$ " background. Make 31.



- 2 (A) Row A: Join 4 Block As and 3 Block Bs as shown. Make 5 rows.
(B) Row B: Join 3 Block As and 4 Block Bs as shown. Make 4 rows.
Join the rows.

